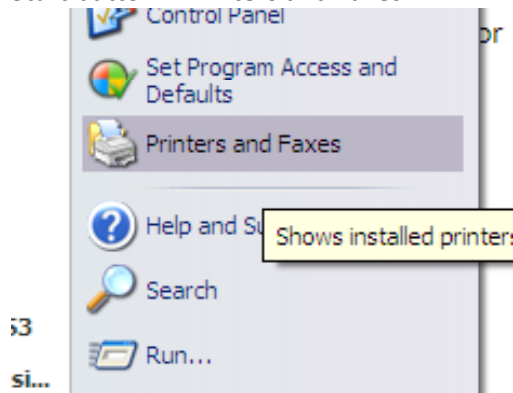
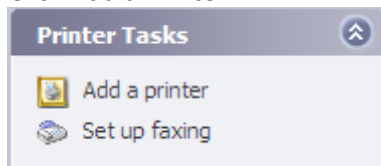


## Instructions for Mapping to a Network Printer

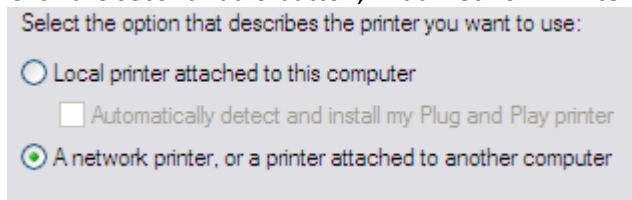
- Start button > Printers and Faxes



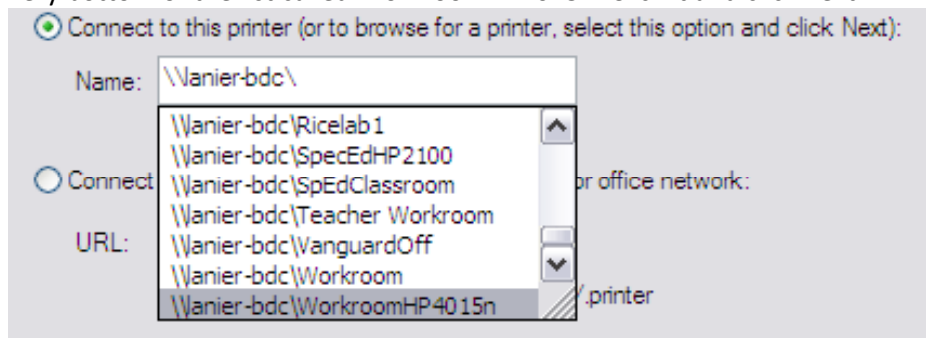
- Click Add a Printer



- The Add Printer Wizard opens; click Next
- Click the second radio button, "Add Network Printer." > Next



- Again, choose the second radio button. In the Name line, type \\lanier-bdc\\. Upon typing the last back slash (\), a list of network printers will appear. The workroom printer is the one at the very bottom of the list called WorkroomHP4015n. Click it and click next.



- Decide whether you want it to be the default printer on your computer. Next.
- Finish.